

The Reno Life Consultation



EXAMPLE CLIENT

Concept Drawings

NB: This is a concept plan only.
All measurements and positions to be confirmed on site.
The Reno Life advises clients to take all necessary steps in ensuring work undertaken meets Australian standards
and therefore are not liable for any negative consequences that may arise from following this concept.

THE
RENO
LIFE

This is an example of what you get when working with us on Package 1 – Complete Floorplan Concept (in person or virtual).

This client, based in Launceston, TAS, was a young couple with three kids, who reached out to see if they could improve the floor plan of their existing home to better suit their family, or if they would need to sell + relocate to get what they want.

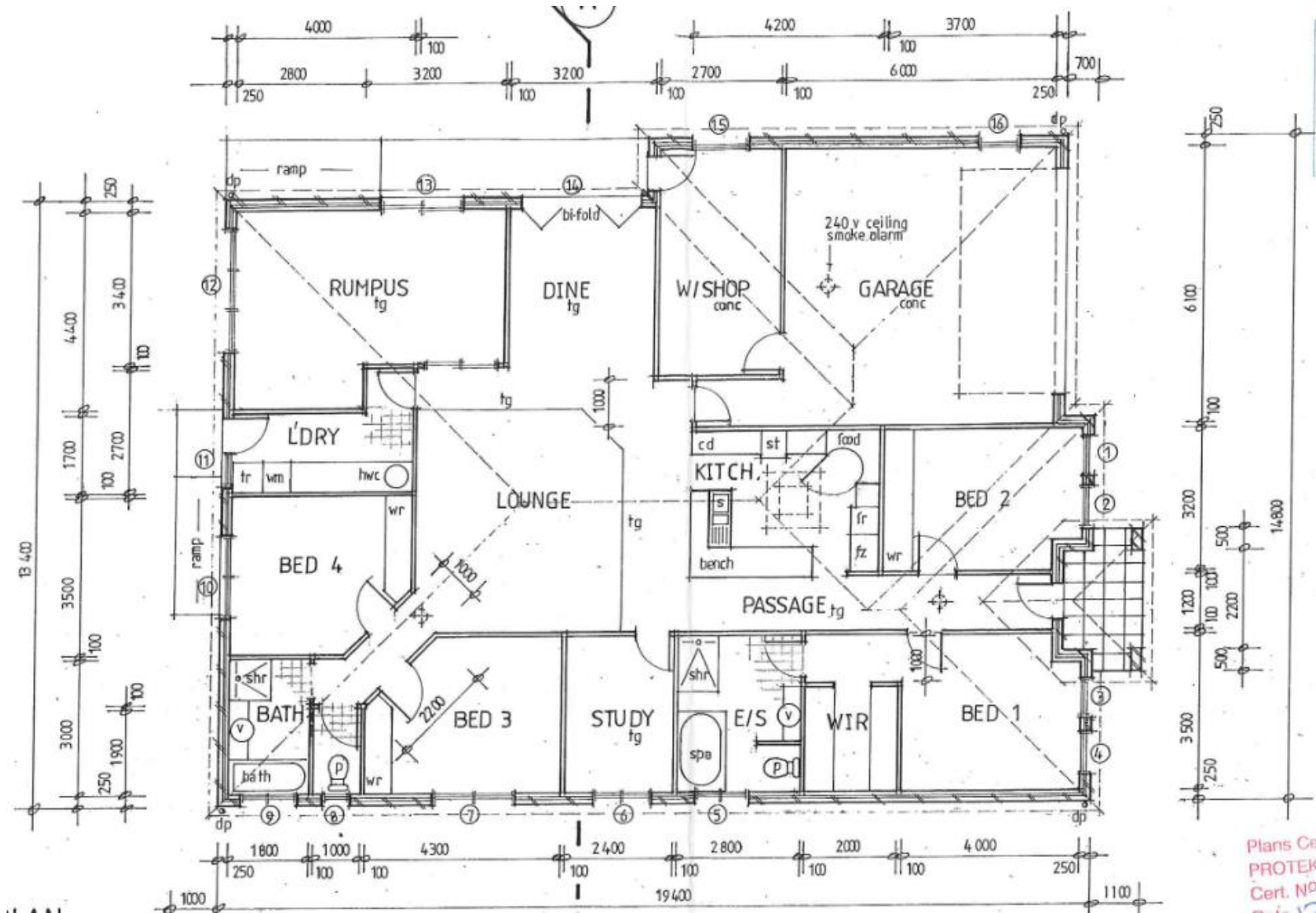
Their main pain points revolved around the many angles in the home, lack of privacy with all doors coming off the living room, and extremely dark kitchen/living area that had no connection to the backyard or benefit of Northern sun.

We worked with them to perfect a master plan that included all of their wish list items; including added storage, minimal wall changes, added privacy and increased natural light throughout.

With no changes from the initial concept presented to them, these clients are extremely happy with the floor plan outlined below + now feel confident to start the next stage of their renovation with a clear plan to present to trades.

THE
RENO
LIFE

Complete FP - Concept/Recommendations
existing floorplan



proposed



Complete FP - Concept/Recommendations
Close up for measurement clarity - laundry



Complete FP - Concept/Recommendations
Exterior



Complete FP - Concept/Recommendations
Exterior



Complete FP - Concept/Recommendations
Exterior



Complete FP - Concept/Recommendations
Exterior



Complete FP - Concept/Recommendations



Complete FP - Concept/Recommendations



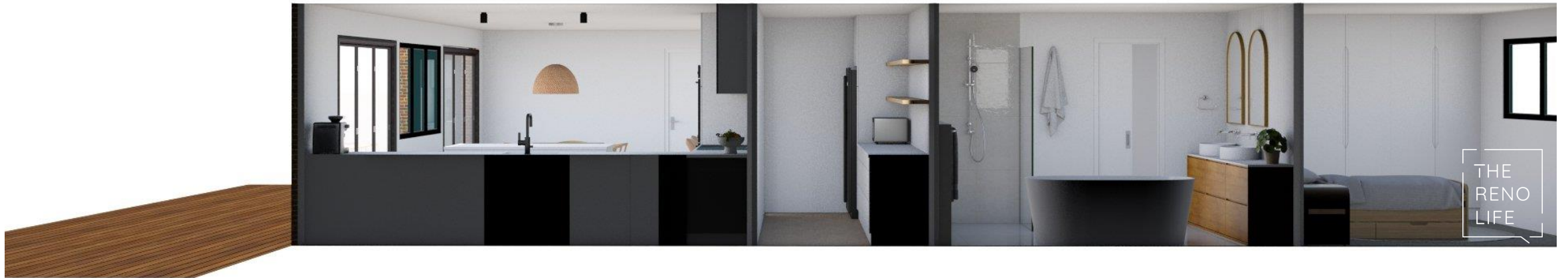
Complete FP - Concept/Recommendations



Complete FP - Concept/Recommendations



Complete FP - Concept/Recommendations



Complete FP - Concept/Recommendations



Complete FP - Concept/Recommendations



Complete FP - Concept/Recommendations



THE
RENO
LIFE

Complete FP - Concept/Recommendations



Complete FP - Concept/Recommendations



Complete FP - Concept/Recommendations



Complete FP - Concept/Recommendations



Complete FP - Concept/Recommendations



THE
RENO
LIFE

Complete FP - Concept/Recommendations



Complete FP - Concept/Recommendations



Complete FP - Concept/Recommendations



Complete FP - Concept/Recommendations



Complete FP - Concept/Recommendations



Complete FP - Concept/Recommendations



THE
RENO
LIFE

Complete FP - Concept/Recommendations



Complete FP - Concept/Recommendations



Complete FP - Concept/Recommendations



Complete FP - Concept/Recommendations



Complete FP - Concept/Recommendations



Complete FP - Concept/Recommendations



Complete FP - Concept/Recommendations



Complete FP - Concept/Recommendations



Complete FP - Concept/Recommendations



THE
RENO
LIFE

Complete FP - Concept/Recommendations



Complete FP - Concept/Recommendations



Complete FP - Concept/Recommendations





Complete FP - Concept/Recommendations



Complete FP - Concept/Recommendations



Complete FP - Concept/Recommendations



Complete FP - Concept/Recommendations



Complete FP - Concept/Recommendations



Complete FP - Concept/Recommendations



Complete FP - Concept/Recommendations

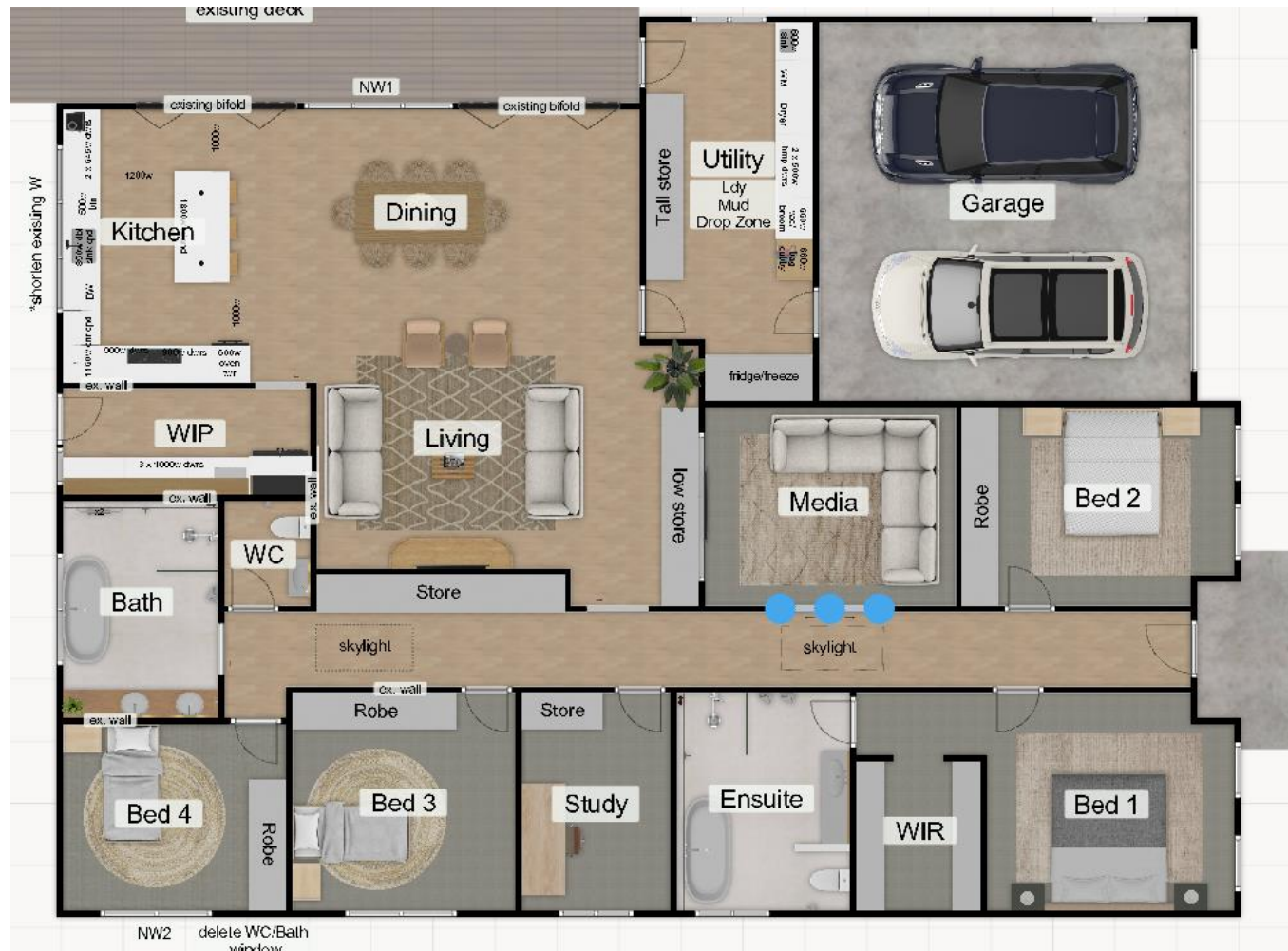


Complete FP - Concept/Recommendations



Complete FP - Concept/Recommendations

Window schedule + Job Notes



Width x height (mm)

NW1 (Dining) - 2400 x 1200

NW2 (Bed 4) - 1800 x 900

All other external windows + doors as existing

Internal doors:

Hallway/Living - 1020mm CS

Media - 1400mm Dbl CS

All others - 820mm

Measurements of:

- Ensuite vanity: 450 x 1500mm
- Both shower screens: 1000mm
- Both baths: 1700mm
- Tiled ledges: 1200 x 120mm
- Hallway store: 4000 x 600mm
- Dining table: 2100 x 1000mm
- Living rug: 3200 x 2800mm